



## **NORTH CENTRAL HIGH SCHOOL, PHASE 2**

### **Addendum 8**

#### **GENERAL**

#### **BID PACKAGE 17 – FLOORING AND TILE WORK**

1. Delete 'CARPETING' from Scope of Work, Item 6 in this bid package. Carpeting will be addressed in the schedule of alternates as noted in this addendum.

#### **BID PACKAGE 23 – GENERAL WORK RESULTS**

1. Add 096800 – Carpeting to this scope of work as outlined per the schedule of alternates.
  63. Furnish and install all carpeting including but not limited to cushion backing, installation accessories, adhesives, and metal edge and transition strips.

This Addendum is hereby made a part of the Contract Documents to the same extent as though it were originally included therein.

## **ARCHITECTURAL**

### **Specifications:**

#### SECTION 01 23 00 ALTERNATES:

Page 3, Line 33, **ADD:**

**ALTERNATE NO. 13A, CARPETING:** Under the Base Bid provide no carpeting as specified in Section 09 68 00 and indicated in the drawings. Under this Alternate provide carpeting as specified by Tandus.

**ALTERNATE NO. 13B, CARPETING:** Under the Base Bid provide no carpeting as specified in Section 09 68 00 and indicated in the drawings. Under this Alternate provide carpeting as specified by Mannington.

#### SECTION 06 40 10, ARCHITECTURAL WOODWORK, Page 1:

Line 29, **CHANGE TO READ:** "Ceiling Type C-5:"

Line 33, **CHANGE TO READ:** "Ceiling Type C-13:"

#### SECTION 09 51 13.1, WOOD CEILINGS AND WALL SYSTEM:

Page 1, Line 31, **CHANGE TO READ:** "Ceiling Type C-5:"

Page 1, Line 35, **CHANGE TO READ:** "Ceiling Type C-13:"

Page 2, Line 48, **CHANGE TO READ:** "Ceiling Type C-5:"

#### SECTION 10 14 33, ILLUMINATED SIGNAGE

**ADD:** New section 10 14 33 attached to the end of this addendum.

### **Drawings:**

#### SHEET A3.05, ROOM FINISH SCHEDULE, FINISH KEY:

**CHANGE:** RSTR2.4 JOHNSONITE RTR-SQ-63 BURNT UMBER, RAISED SQUARE PATTERN

**CHANGE:** RS2.5 JOHNSONITE 24"x24" RUBBER TILE, #63, BURNT UMBER, RAISED SQUARE PATTERN RT-SQ

#### SHEET A3.09 LEVEL 3 FLOOR PATTERN PLAN

**CHANGE:** per the attached clarification drawing CA-24, (adds pattern location for commons stair).

#### SHEET A3.10, DOOR SCHEDULE

**CHANGE:** Door N102 Material to "STL" and Finish to "PT" **ADD** "INSULATED" to the Remarks column.

DOOR TYPES LEGEND **ADD:** Door Type "D" per the attached clarification drawing CA-25.

### **Prior Approvals:**

The following products are approved for bidding subject to review and approval of Submittals and provided the Manufacturer meets all the requirements of the originally specified product. It shall be the initiator's responsibility to ensure that the proposed substitution is equal in every respect to the originally specified product, including but not limited to finish, size, weight, clearances, durability, maintenance, ease of operation, performance criteria, etc.

09 68 00 CARPETING: Mannington Entwined Collection, Ramie, Broadloom (Hull #12335)

SECTION 10 14 33 – ILLUMINATED SIGNAGE

PART 1 - GENERAL

RELATED DOCUMENTS:

Drawings and general provisions of Contract, including General Conditions and Division-1 Specification sections, apply to work of this section.

Sustainability: Conform to Section 01 81 13 WSSP requirements for use of recycled content, waste management, and regional materials.

Division 26: General Electrical Requirements.

Division 26: Raceway Systems.

Division 26: Outlet Boxes.

Division 26: Identification.

SUMMARY:

Provide complete and operating illuminated signage system at the exterior west entrance integrated in the storefront system, as indicated on the exterior elevation and attached hereto (with sign drawing as basis-of-design).

Adjust and test the illuminated signage equipment, and demonstrate operation to the Owner's Representative.

Instruct the Owner's staff in operating the equipment and recommended maintenance procedures.

GENERAL DESCRIPTION:

Systems shall consist of illuminated signage, and internal lighting, wiring and other controls for same—for a complete operational system

Provide all equipment at the locations indicated.

SYSTEMS OPERATION:

General:

The new illuminated signage systems shall be controlled by electrical controls governing other exterior lighting (not internal to the sign), but the sign shall accommodate controls contactor for same.

Technical Requirments:

Provide UL label on sign and code-required disconnect switch.

Power characteristics: 120V/277V multi-voltage.

Dimmer: Provide internal dimmer for one-time adjustment at initial installation.

WARRANTY:

In addition to the warranty specified in the General Conditions, the illuminated signage manufacturer shall warranty the illuminated signage equipment to be free from defects in materials and workmanship. This additional warranty shall extend for a period of at least two (2) calendar years from the date of Substantial Completion. The warranty shall cover the full cost of all repairs and all replacement costs for the illuminated signage systems, including parts and labor, except labor to remove and reinstall the unit and shipping expenses. The warranty shall not be pro-rated and there shall be no deductible amount. Include warranty certificate in the Operating & Maintenance Manuals.

SUBMITTALS:

Product Data: For each type of illuminated signage provided on the Project.

Shop Drawings: Outline drawings showing dimensions, mounting provisions, display layout and color scheme of illuminated signage.

INFORMATION FOR OPERATING & MAINTENANCE MANUALS:

Operating Instructions: Supply a detailed narrative description of the operation of the illuminated signage systems. Indicate application conditions and limitations of use. Include manufacturer's installation and operating instructions.

Maintenance Instructions: List replacement parts, including source. Indicate recommended maintenance procedures, and the intervals involved for each. List all individual system components that require periodic maintenance. Furnish service directory with names and telephone numbers for use in obtaining service.

Warranty: Manufacturer's warranty certificate.

ALTERNATES:

See Section 01 23 00, Alternate No. 12.

PART 2 - PRODUCTS

MATERIALS:

Illuminated Signage:

Provide a complete self-contained illuminated sign consistent with the attached basis-of-design drawing prepared by YESCO, 5000 East Seltice Way, Post Falls, ID, 83854, 208-773-4718 Telephone.

Finishes:

As indicated on basis-of-design drawing.

PART 3 - EXECUTION

INSTALLATION:

Install equipment in accordance with the manufacturer's instructions in the locations indicated on the Drawings.

1  
2 Coordinate the control requirements with project conditions to insure proper operation. Provide all  
3 necessary accessories.

4  
5 Illuminated signage shall be securely attached to the building structure.

6  
7 Power and control connections shall be made at locations recommended by the equipment manufacturer.  
8 Final connections between the equipment and the wiring system shall be made under the supervision of a  
9 representative of the equipment manufacturer.

10  
11 Deliver loose materials associated with the illuminated signage to the Owner.

12  
13 MOUNTING HEIGHTS:

14  
15 Mounting heights shall be as indicated on the Architectural Drawings.

16  
17 ON-SITE TRAINING:

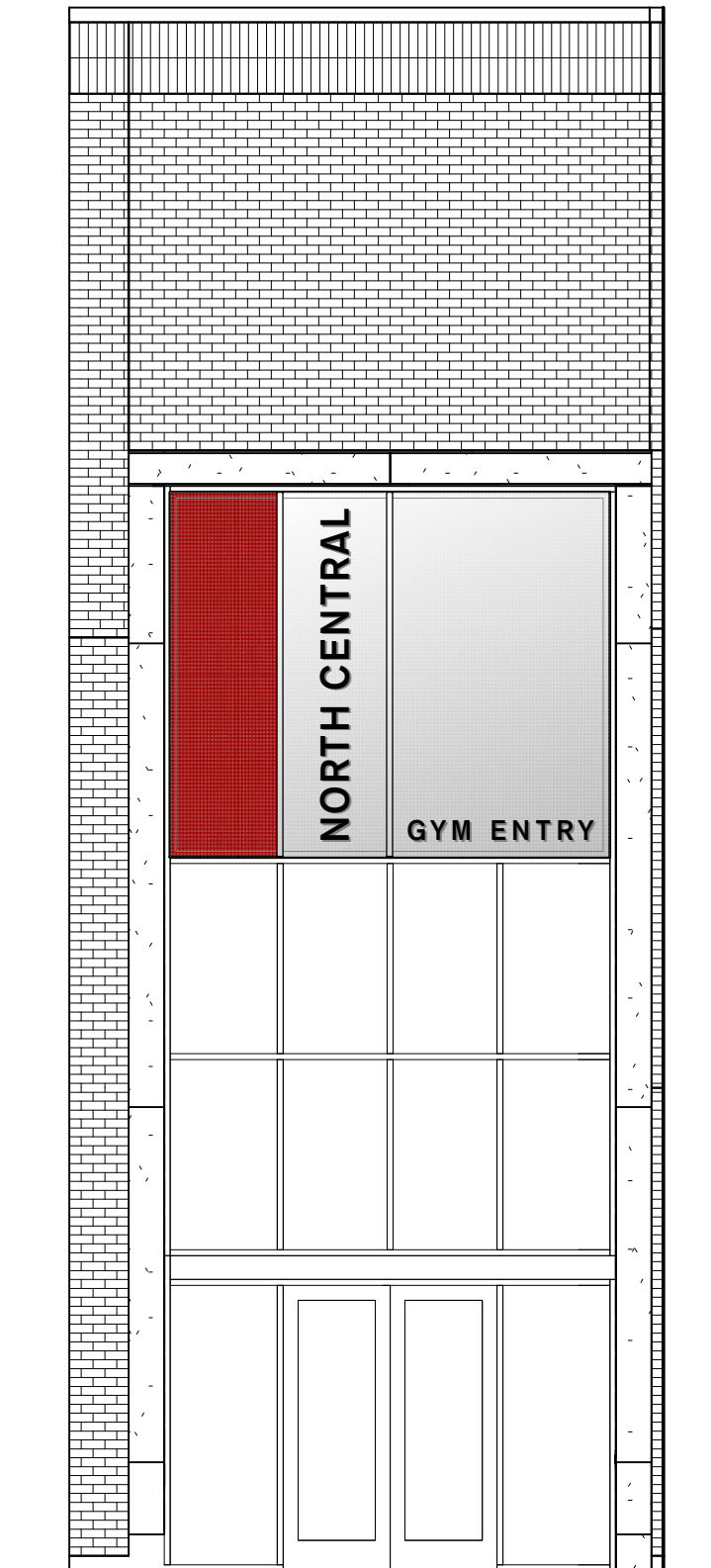
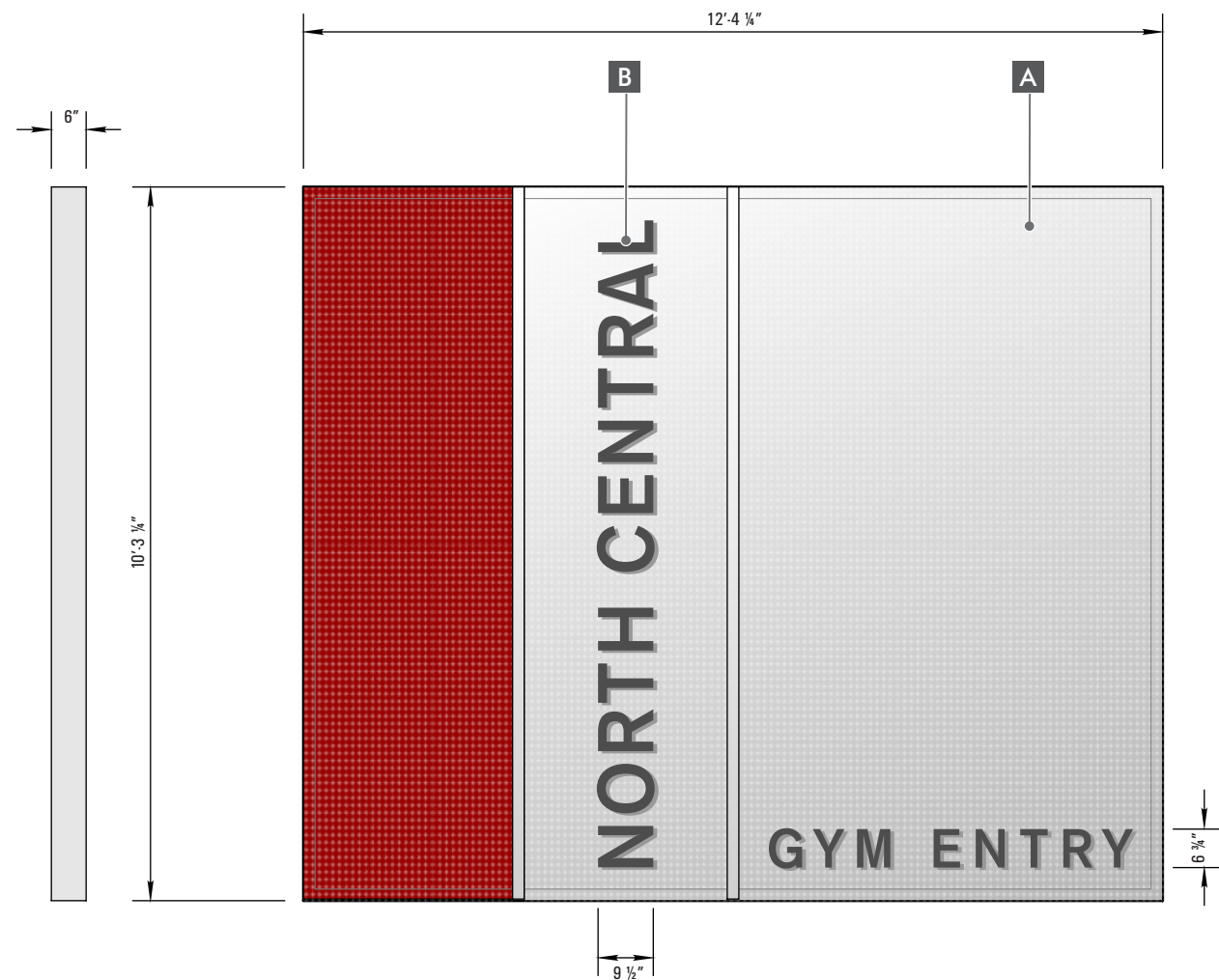
18  
19 Conduct one (1) hour minimum of training for the Owner's staff in operating the illuminated signage  
20 systems. In addition, inform the Owner's maintenance personnel regarding maintenance of the systems.

21  
22 The training shall be conducted after the Operating and Maintenance Manuals for the project are completed  
23 and available for use during the training session.

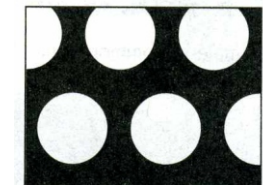
24  
25 The training shall be conducted by a representative of the equipment manufacturer who is thoroughly  
26 familiar with the equipment and its features, and with the Project. The training shall include instruction and  
27 field demonstration. As a minimum, the training shall cover, but not be limited to, the following topics:

- 28  
29       General overview of illuminated signage systems, including purpose and principle of operation.  
30       Control adjustments and settings.  
31       Recommended maintenance procedures and intervals.  
32

33  
END OF SECTION 10 14 33



FABRICATION SPECIFICATIONS		
A	CABINET	TYPE
		S/IF ILLUMINATED (WHITE LED'S) AGILITE BOXRAYZ 400 12" CENTERS (HORIZONTAL ROWS) 16" CENTERS (VERTICAL SPACING) <b>(LED'S MUST BE DIMMABLE)</b>
		FRAME
		SEE ENGINEERING
		SKIN
		PERFORATED ALUMINUM 1/4" HOLES ON 3/8" CENTERS STAGGERED
		PAINT COLOR
		METALLIC SILVER RED (TBD)
B	LETTERS	TYPE
		FCO 1/4" ALUMINUM PAINT COLOR DARK GRAY MOUNT STAND OFF FACE 1/2"



**Coeur d' Alene**  
5000 E Seltice Way  
Post Falls, ID 83854  
208-773-4718

This drawing was created to assist you in visualizing our proposal. The original ideas herein are the property of YESCO. Permission to copy or revise this drawing can only be obtained thru a written agreement with YESCO.

© 2013 YESCO LLC  
All rights reserved

[www.yesco.com](http://www.yesco.com)

CLIENT:

NORTH CENTRAL HIGH SCHOOL

ADDRESS:

1600 N HOWARD ST

CITY / STATE / ZIP:

SPOKANE, WA

ACCOUNT EXECUTIVE:

**BRENT SMITH**

DESIGNER:

DIETZ

ORIGINAL DATE:

### 3.10.16

## CUSTOMER APPROVAL

---

Client Signature / Date

Landlord Signature / Date

ELECTRICAL NOTE

**NOTE:** UNLESS OTHERWISE NOTED, ELECTRICAL RUNS OR FINAL ELECTRICAL CONNECTION CHARGES ARE NOT INCLUDED. ILLUMINATED DISPLAYS WILL BE WIRED FOR 120 VOLT POWER UNLESS OTHERWISE INDICATED.

IF VOLTAGE IS NOT 120 PLEASE INDICATE YOUR VOLTAGE HERE

**VOLTS**                      **AMPS**

**UL NOTE**



YES  
MA

 YESCO IS A UL RECOGNIZED MANUFACTURER

THIS SIGN IS INTENDED TO BE INSTALLED IN ACCORDANCE WITH THE REQUIREMENTS OF ARTICLE 600 OF THE NATIONAL ELECTRICAL CODE AND / OR OTHER APPLICABLE LOCAL CODES. THIS INCLUDES PROPER GROUNDING AND BONDING OF THE SIGN.

## REVISIONS

DATE	REVISION	DESIGNER
------	----------	----------

$$\triangle + \underline{\hspace{2cm}}$$

DESIGN NUMBER:

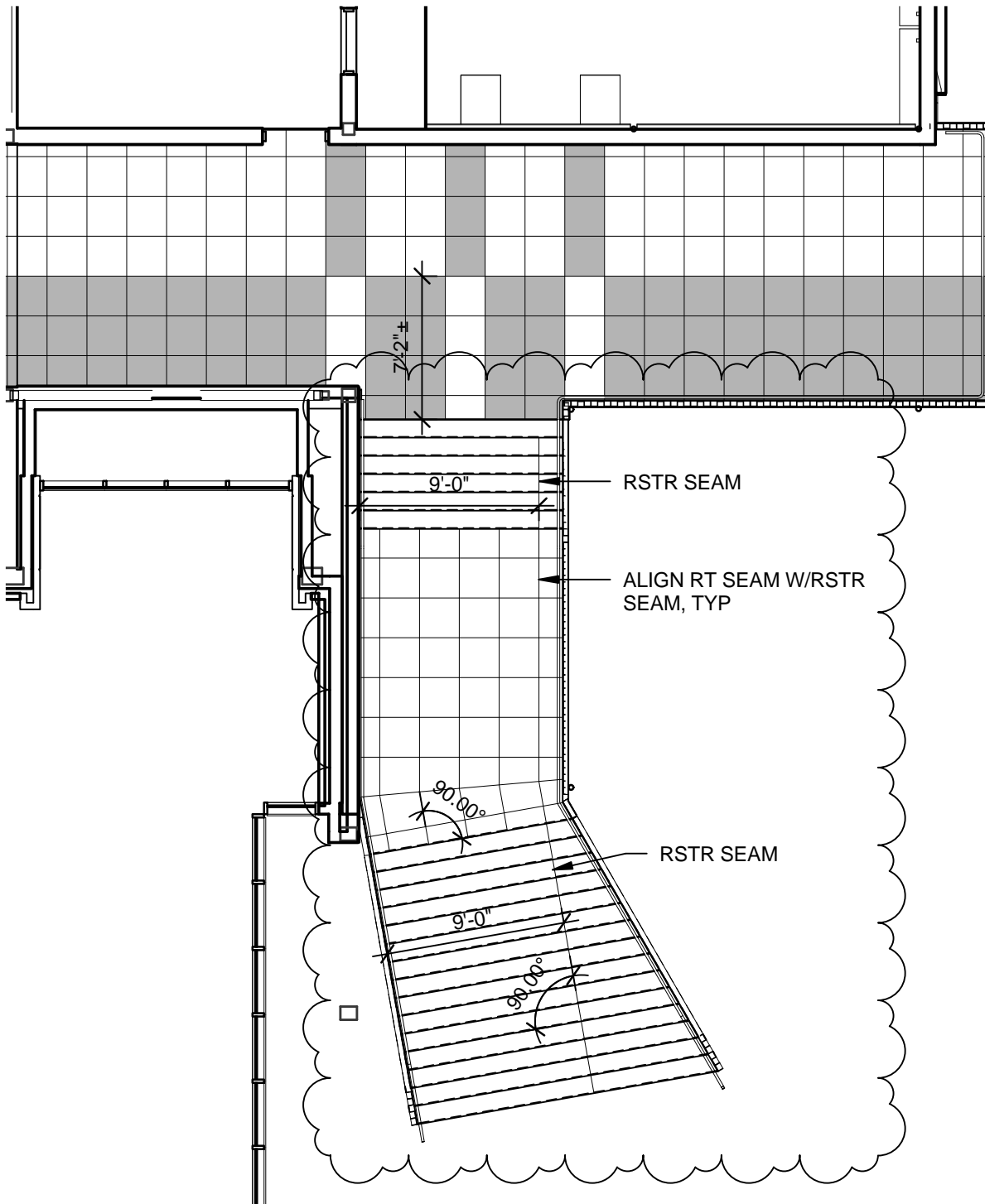
316852

PAGE

1

OF

1



© 2016 NAC Inc

SPOKANE PUBLIC SCHOOL DISTRICT NO. 81  
**NORTH CENTRAL HS CAFETERIA/COMMONS  
 ADDITION**

1600 NORTH HOWARD STREET, SPOKANE, WA 99205

**NAC**  
 ARCHITECTURE  
 nacarchitecture.com

1203 WEST RIVERSIDE AVE  
 SPOKANE WA 99201  
 P:509.838.8240

NAC NO: 111-15017  
 FILE:  
 DRAWN:  
 CHECKED:  
 DATE:

**CA-24**

RE: A3.09

ADDENDUM 8

# DOOR TYPES

Scale: 1/4" = 1'-0"

